



GMT MONTHLY MEMBERSHIP PROGRESS REPORT

Results as of: 8/31/2019

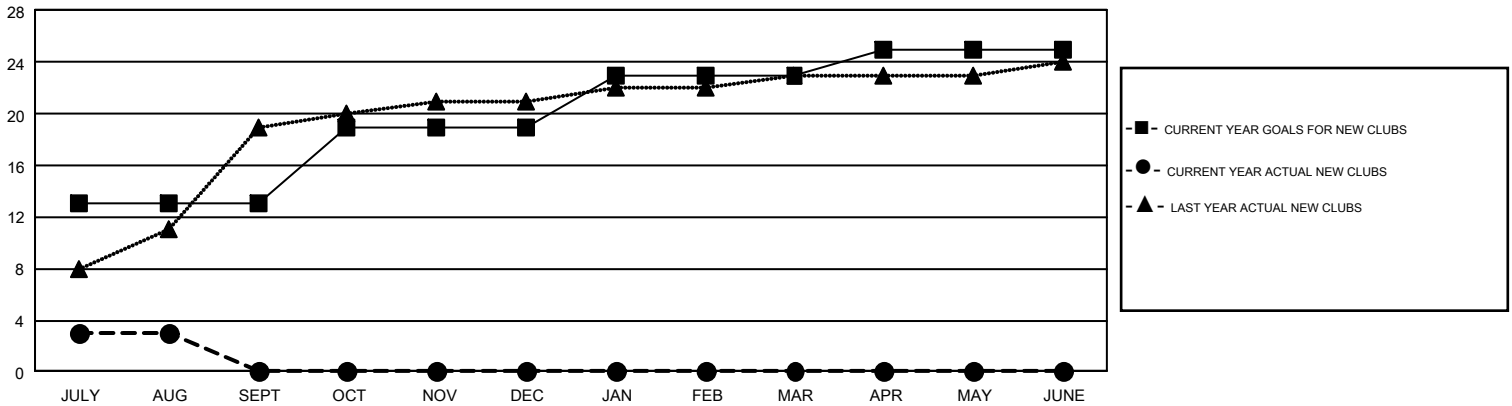
GMT Constitutional Area 6, Group O

GMT: OPEN

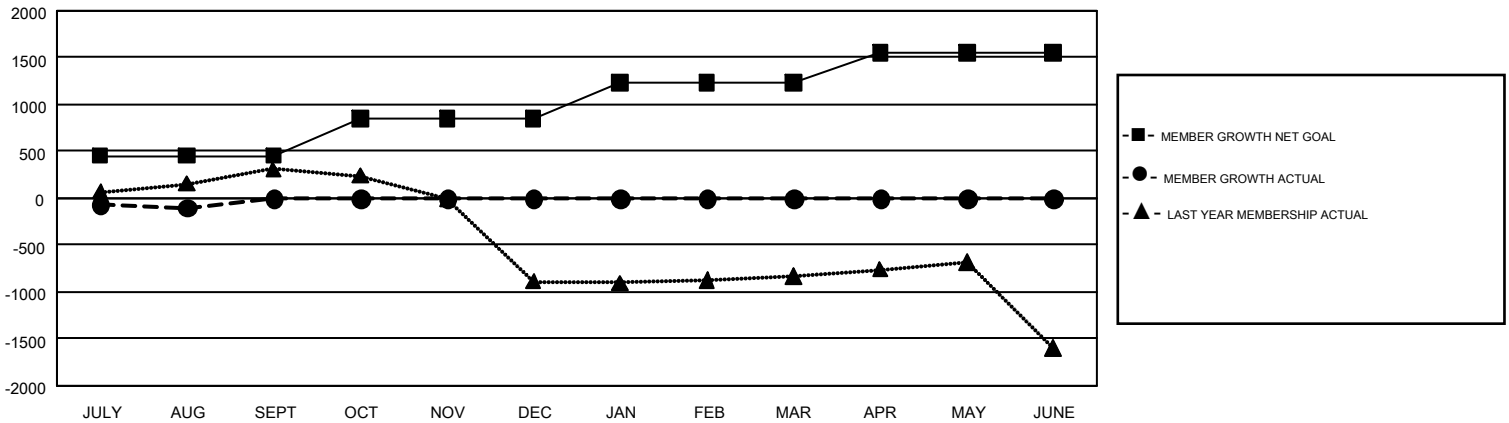
REPORT DOES NOT INCLUDE CLUBS IN UNDISTRICTED AREAS.

Clubs				Members			
RESULTS FOR 2019-2020				RESULTS FOR 2019-2020			
QUARTER	NEW CLUB GOAL	NEW CLUBS	DROPPED CLUBS	QUARTER	MEMBER GROWTH NET GOAL	MEMBER GROWTH ACTUAL	DROPPED MEMBERS ACTUAL (including transfers)
JULY/AUG/SEPT	13	3	0	JULY/AUG/SEPT	450	287	342
OCT/NOV/DEC	6	0	0	OCT/NOV/DEC	400	0	0
JAN/FEB/MAR	4	0	0	JAN/FEB/MAR	380	0	0
APR/MAY/JUNE	2	0	0	APR/MAY/JUNE	320	0	0

GOALS AND ACTUAL NEW CLUBS CUMULATIVE



GOALS AND ACTUAL MEMBERS CUMULATIVE



DROPPED CLUBS: 0	59 CLUBS OF 365 ADDED 1 OR MORE NEW MEMBERS	<u>GENDER DISTRIBUTION</u>	
<u>DROPPED MEMBERS</u>		MALE	10,647 (65.61%)
DECEASED	4	FEMALE	5,580 (34.39%)
CLUB CANCELLED	0	TOTAL FAMILY UNIT MEMBERS	9,734
OTHER	338	FAMILY MEMBERS PAYING HALF DUES	5,488
TOTAL	342		

[CLICK HERE FOR CUMULATIVE MEMBERSHIP DATA](#)